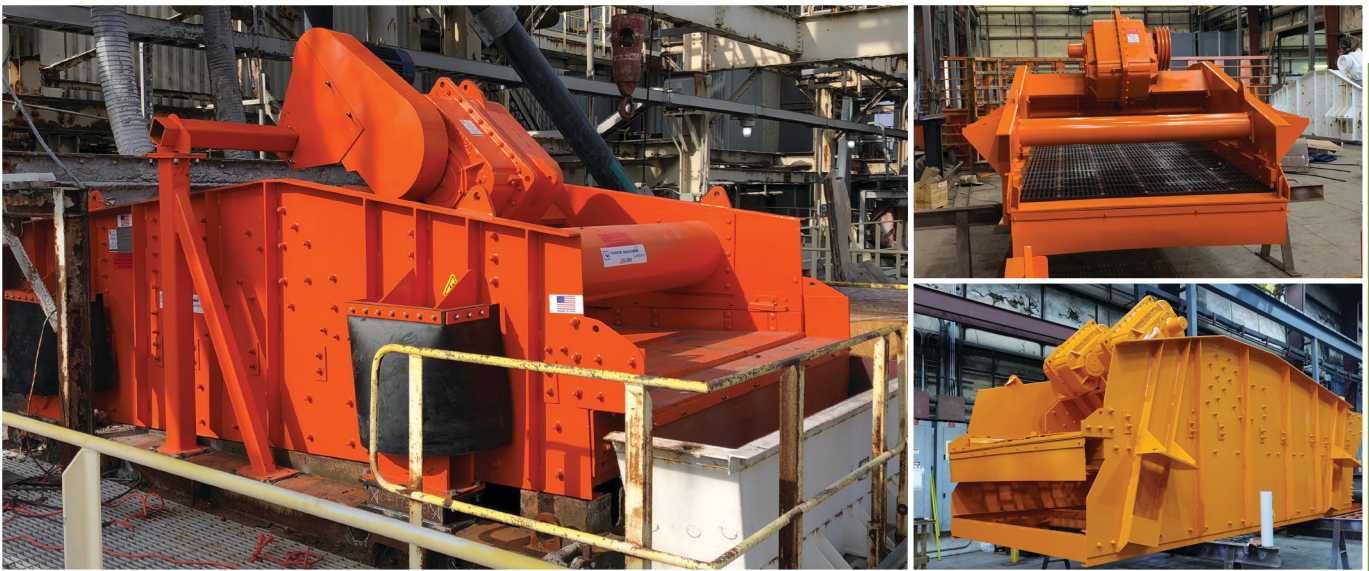


Tabor Horizontal Vibrating Screen

Efficient

Trouble-free Heavy duty

A mainstay in coal prep, magnetite recovery, and dewatering, the high-performance Tabor Horizontal (TH) Vibrating Screen delivers rock-solid dependability. It's ideal for environments with high production volume but limited space, and is available in single, double, and triple decks. With rugged construction and smart customization options, it gives you everything you need for worry-free work.



Rugged Construction

- Huck bolting
- Heavy-duty deck support frame to give strength and reliability without adding excessive weight
- 3/8" A36 steel sideplates reinforced with vertical and horizontal bars
- Massive body supports to reduce body flexing
- Drives that last an average of 8-10 years
- Works with a variety of screen media, including woven wire, punch plate, rubber, grizzly bars, or Polyurethane

Custom Options

- Lined feed boxes
- Pivoting motor bases
- Dust enclosures
- Choice of solid decking or independent cross members
- Patented QuickChange Removable Spring Seat System
- Polyurethane-dipped drive bottoms
- Remote drive bearing monitoring



Mining • Minerals • Water
Oil & Gas • Rendering • Trenchless
Renewables • Utilities • Industrials

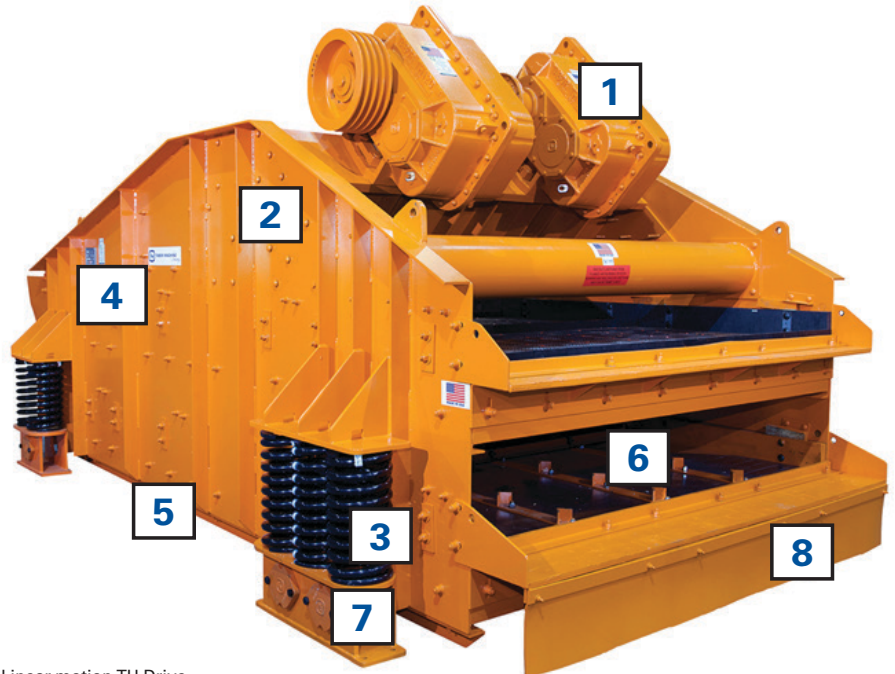


1176 Shelter Road
Princeton, WV 24739 • 304-431-4100
www.elginseparationsolutions.com

Yes, this beast is a beauty.

Specifications

Standard Sizes (Custom Sizes Available)	Width: 3' – 8' Length: 8' – 24' Single, double, triple decks
Construction	3/8" A36 steel sideplates reinforced with vertical and longitudinal stiffeners, body stiffeners to reduce body flexing, huck bolts, heavy-duty deck support frame
Cut Point	Below 1 1/2"
Screen Media	Woven wire, profile, poly, rubber, perforated plates, and custom designs
Motors/Drives	Linear
Materials	Coal, coke, crushed stone, sand and gravel, iron ore, potash, phosphate, copper, magnetite recovery, metallic and non-metallics
Customizable Options	<ul style="list-style-type: none">• Unitized Package• UHMW-lined effluent pan• A-frame motor support• Rubber-lined or ceramic water box• QuickChange Removable Spring Seat system• Remote monitoring of drive bearings• Custom paint



1. Linear-motion TH Drive
2. Huck-bolted assembly on all major body components
3. Steel coils for floor mounting
4. Heavy-duty steel side plates with vertical and longitudinal reinforcing bars
5. Rugged deck support frame with cross tube members and side channels
6. Interchangeable screen media
7. QuickChange Spring Seat system
8. A variety of paint options for maximum corrosion resistance

But we're more than just a pretty screen.

We're a company that's dedicated to building a relationship that extends beyond the sale. That's why we offer our Drive Rebuild/Exchange Program, 24/7 customer service, and all the support you need to keep business moving.

A Beneficial Drive Rebuild/Exchange Program

If your drive ever needs repaired or replaced, we will exchange it for a new or rebuilt drive that carries a full one-year warranty. There's no cost for the program, you simply pay the repair costs of your old unit.

Incredible Customer Service

- 24/7 availability
- Complete inventory of spare parts
- Our own truck fleet for local deliveries
- Parts available, picked, and delivered—fast

All the Power of Elgin

When you choose the Tabor Horizontal Screen, you're not just getting a rugged piece of equipment. You're getting the full power of Elgin, a worldwide leader in minerals processing. With offices and joint ventures worldwide, we provide unparalleled solutions and support when you need it most.



Mining • Minerals • Water
Oil & Gas • Rendering • Trenchless
Renewables • Utilities • Industrials



1176 Shelter Road
Princeton, WV 24739 • 304-431-4100
www.elginseparationsolutions.com