



# KEMTRON 600-Series HDD Packages

2021 – Revision C

Natural Resource Recycling • Product Classification • Fluid Recovery  
Dewatering • Waste Management • Material Handling • Liquid/Solid Separation



# Turn-Key OEM Solutions

Elgin's Turn-Key Services Provide Unparalleled Value



## Fixed & Semi-Permanent Waste Treatment Facilities

Both working for EPC companies and as our own integrated EPC company, Elgin can deliver full-engineered waste treatment plants.

Elgin's turn-key plant services include full engineering submittals, customized engineering, commission and on-site personnel training and certification.



## Trailer-Mounted Waste Treatment Facilities

Elgin provides a host of trailer-mounted waste and drilling fluid treatment systems for a host of industries.

Whether installed on a rock-over, drop-deck, pintle-hook, goose-neck or tank tracks, Elgin has developed the experience to provide exactly what is needed for each application.



## Skid-Mounted Waste Treatment Facilities

Elgin's skid-mounted packages are designed to customer specifications. Each skid-mounted system carefully considers the local regulations, customer needs, and market expectations.

The ultimate goal is to provide a cost-effective system with the lowest possible field-erection time.

There are a myriad of options available for each installation that should be considered before finalizing the system configuration.



# KT-600X

Mobile Packaged Drilling Fluid Reclamation System

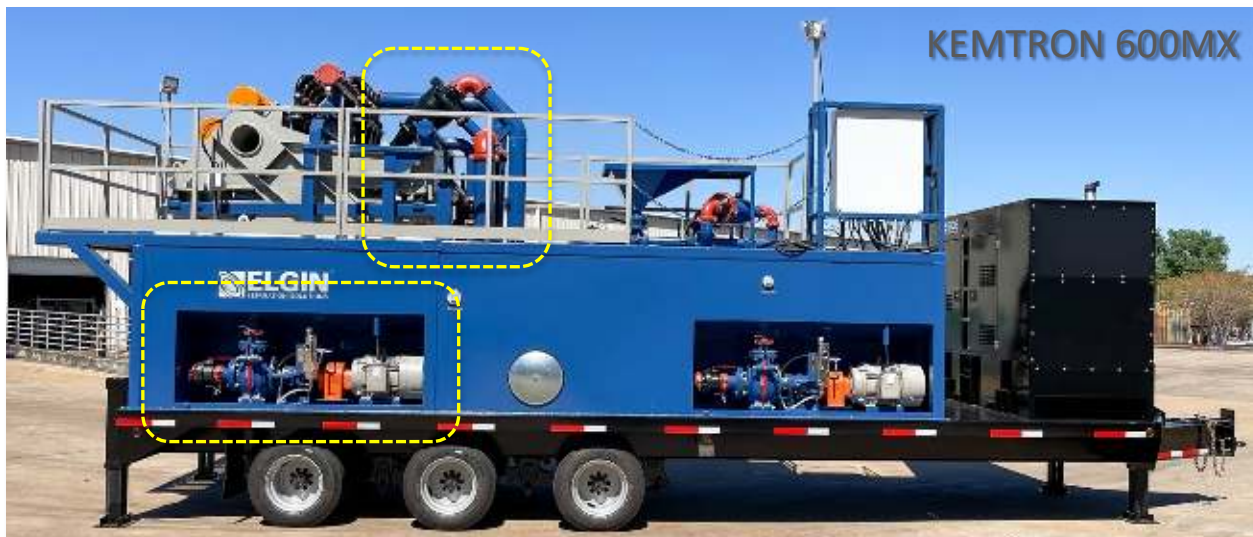


The KT-600X Represents the Most Sophisticated HDD Mobile Packaged Drilling Fluid Reclamation System Available.



# KT-600X and MX

Mobile Packaged Drilling Fluid Reclamation System Configurations



The KEMTRON 600X features Two (2) Different Configurations; The Standard Configuration and the 600MX with Integrated Desander Package to Maximize Sand Control and Separation Efficiency.

# KT-600MAX

Mobile Packaged Drilling Fluid Reclamation System Configurations

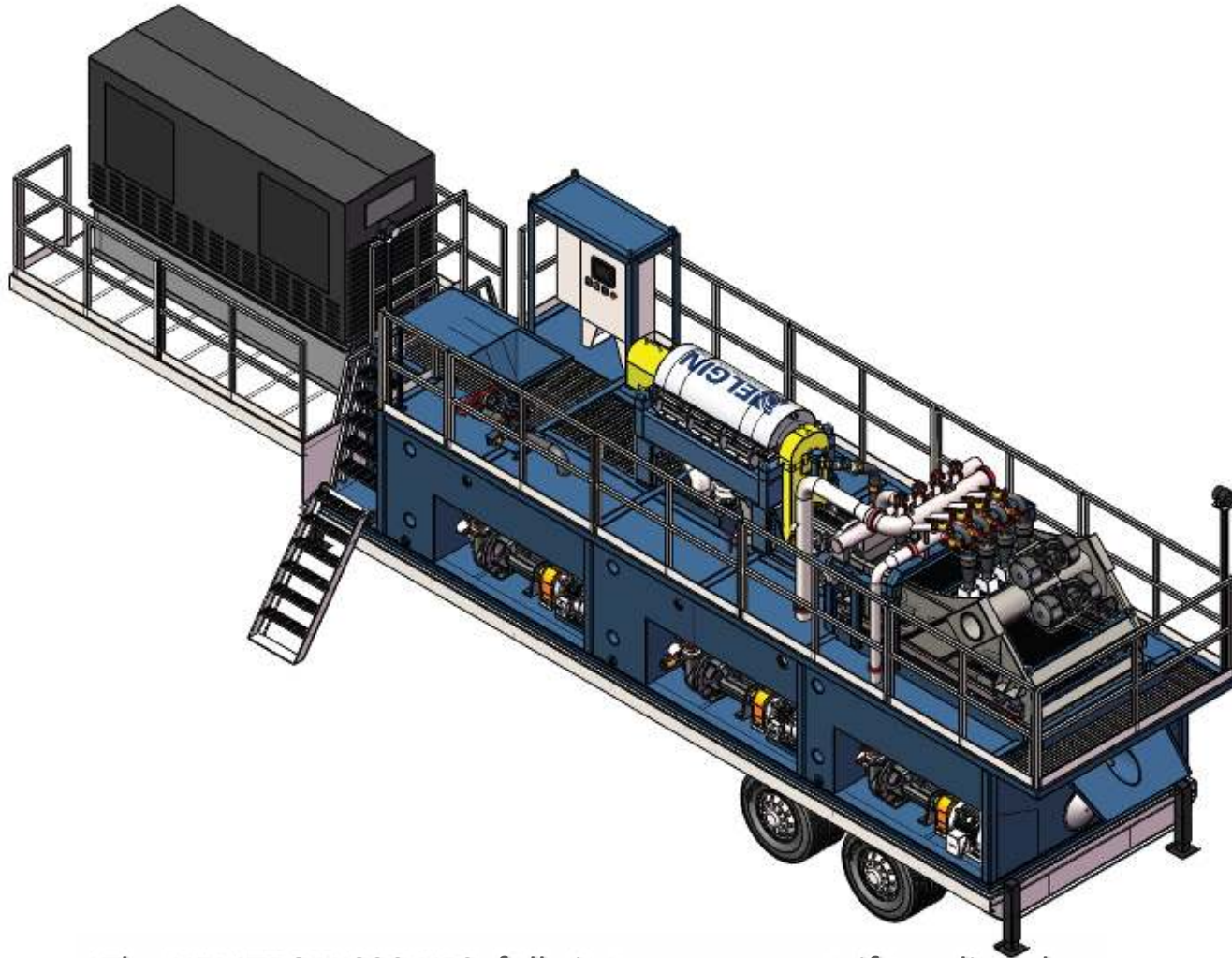


The KEMTRON 600MAX

The Tango 600MAX features All of the Elements of the 600MX, but Upgrades the Shaker to the Eight (8) Panel Mega-G™ Shaker Fitted with Elgin Wave™ Screens or Polyurethane Screen Panels

# KT-600XPT

Maximum Solids Control Through Centrifuge Technology



The KEMTRON 600 XPS, fully integrates a centrifuge directly within the footprint of KEMTRON 600X or MX. Includes feed pump and VFD HMI touch-screen interface.



# KT-600X

A New Standard in Pump Service and Maintenance



4x3 Lined Abrasion-Resistant Centrifugal Pumps Coupled with Premium High-Efficiency, Continuous Duty Motors have been Utilized for the Desilter Feed, Mud Gun / Hopper, and Transfer Pump Packages.

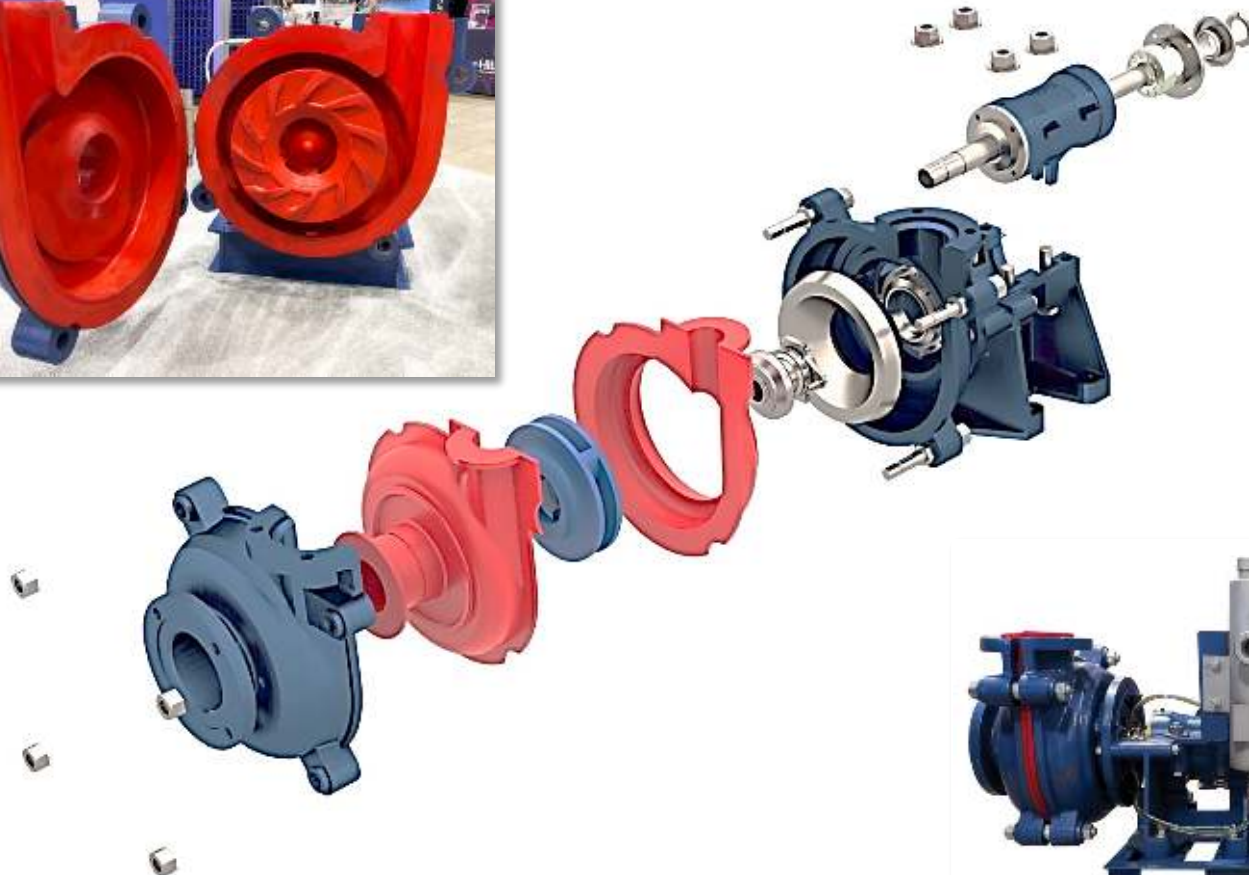
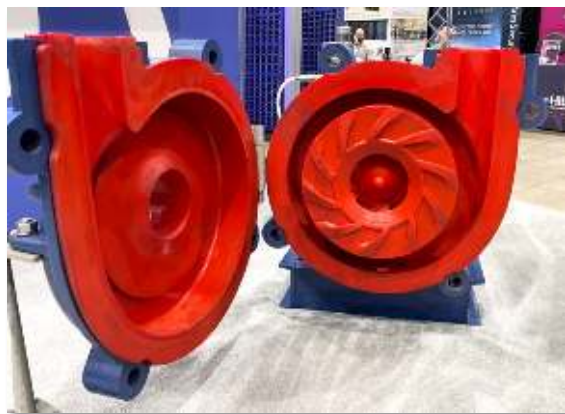


The KT-600X Deploys the Industry's First Abrasion-Resistant Split-Casing, Split-Pedestal Centrifugal Pumps.



# KT-600X

A New Standard in Pump Service and Maintenance



- Abrasion Resistant Construction
- Corrosion Resistant Materials
- Durable Mechanical Seal
- Split Casing and Pedestal Design



The KT-600X Deploys the Industry's First Lined Abrasion-Resistant Split-Casing, Split-Pedestal Centrifugal Pumps.



# KT-600X

A New Standard in Pre-tensioned Screen Surface Area



Elgin's New Wave Profile Provides for a 40% Increase in Screening Surface Area.



The KT-600X Deploys a Brand New Pre-Tensioned Screen Panel that Includes a Wave Profile.



# KT-600X

A New Standard in Drilling Fluid Mixing



- Prevents Formation of Fish-Eyes or Microgels.
- Dynamic Shearing Enhances Surface Wetting and Hydration of Bentonite.
- Promotes Additive Waste Reduction.
- Creates Quick and Uniform Dispersion of Additives within the Drilling Fluid.
- Net Result is Reduced Cost.

Normally Reserved for Sophisticated High-Shear Mixing Packages, the KT-600X Deploys a Brand-New High-Shear Mud Mixing System.



# Smart Panel Control System

A New Paradigm in Integrated Fluid Reclamation System Controls

- Elgin's Proprietary Smart Panel Allows Operators to Run and Monitor the Reclaimer from a Smart Phone, Tablet or Laptop.
- Comes integrated with Operation Data Logging for Performance Monitoring and Failure Tracking.
- Desilter and Hopper Pressure Monitoring to Ensure Optimum Drilling Fluid Conditions
- Tank Fluid Level Indicators and Alarms.
- Automated Pump Operation with Audible and Visual Alarm System Interlocks.
- Automated Operator Alerts to Ensure Proper Preventative Maintenance.
- Net Result is Improved Up-Time and Reduced Operator Oversight.

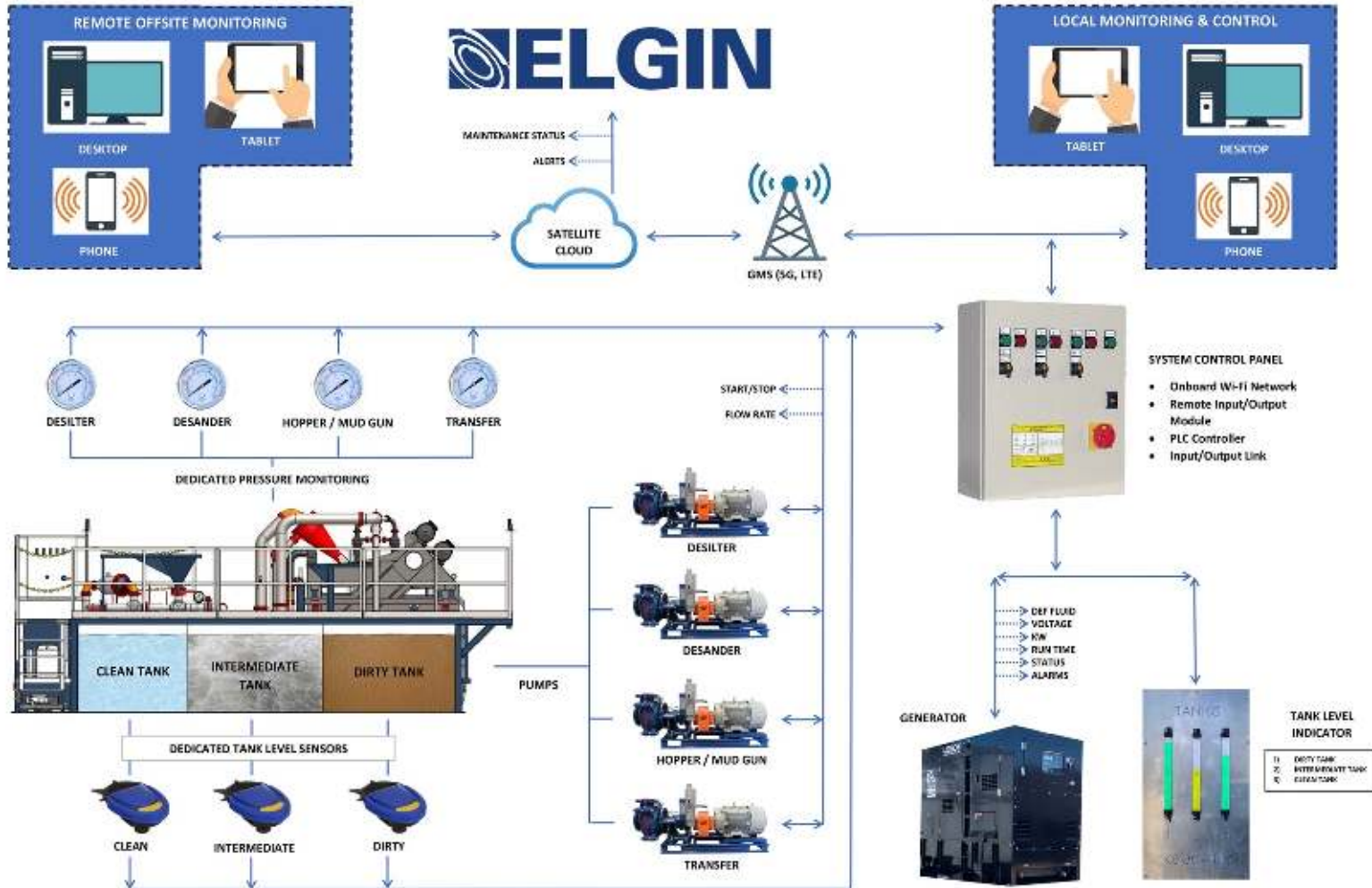


Elgin's Smart Panel Control System provides for the lowest cost operator oversight of any reclaimer in the industry.



# Smart Panel Control System

A New Paradigm in Integrated Fluid Reclamation System Automation



Elgin's SmartPanel Controls Monitor Dozens of On-Board Processes to Reduce Operator Error and Improve Up-Time.

# HMI Touch-Screen Control Interface

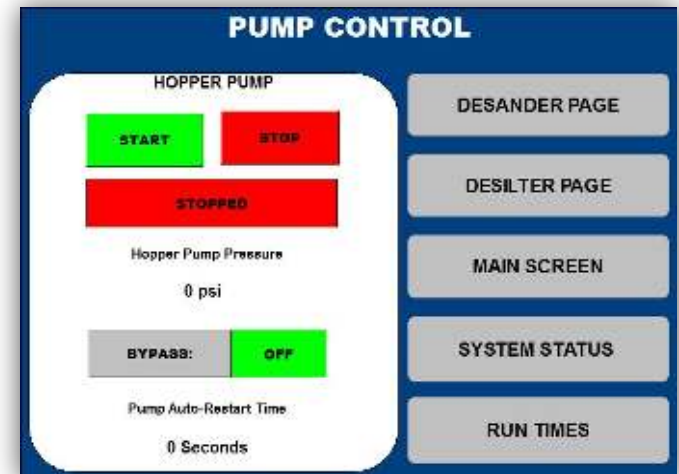
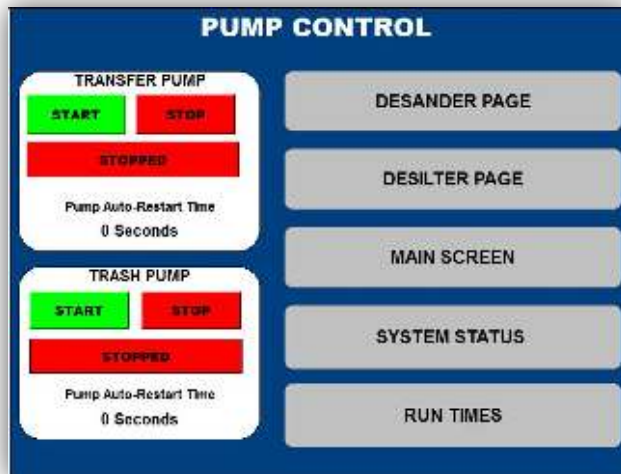
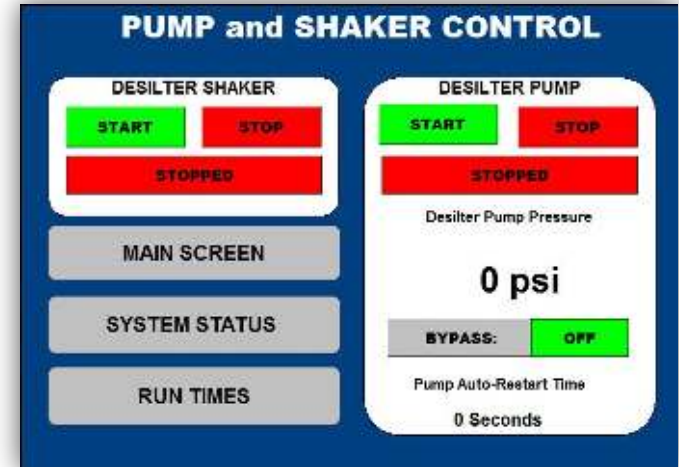
Directly From Your Smart-Phone, Tablet or Laptop.



Touch Screen Interface to Control all On-Board Pumps, Trash Pump and Shaker.

Integrated Run-Time Counters for All Systems to Enhance Preventative Maintenance.

Pressure Monitoring of Hydrocyclone Manifold to Maximize System Performance.



# HMI Touch-Screen Control Interface

Directly From Your Smart-Phone, Tablet or Laptop.



Run Time Counters Will Preemptively Notify Operators of Greasing and Maintenance Schedules.

Detailed Event Logs Will Track Fault Conditions and Maintain Detail Records of the Units Operation.



On-Board Hydro-Cyclone Pressure Sensors Will Notify Operators of Need to Service Equipment.

Any Tripped Electrical Conditions Due to Overloads Will be Clearly Noted on the User Interface.



Full Wireless Integration with Your Smart Phone or Tablet with a Dedicated Local Wifi Network.





# KEMTRON 600-Series HDD Packages

2021 – Revision C

Natural Resource Recycling • Product Classification • Fluid Recovery  
Dewatering • Waste Management • Material Handling • Liquid/Solid Separation

