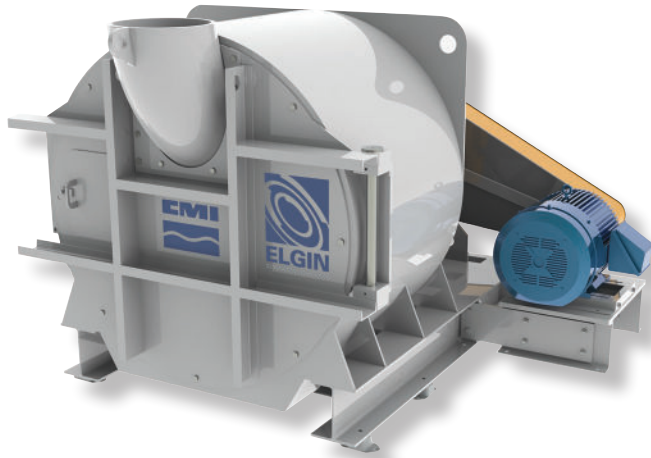


CMI™ HVC 1400/1500-100 Series Horizontal Vibratory Centrifuge



Elgin's Horizontal Vibratory Centrifuge (HVC) builds on seventy years of dewatering experience and reliability. While terms like "workhorse" and "built like a tank" are used in describing past and present CMI™ centrifuges, the HVC continues this tradition of industry leading durability.

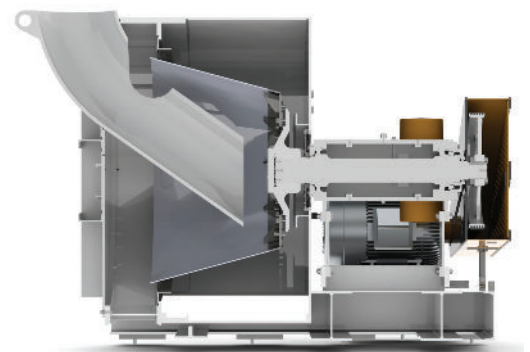
The CMI™ HVC-1400/1500-100 Series utilizes a 'oil-bath' lubrication system with no need for a pump, filter, gauges, or pressurized oil lines. In addition, the sealed cartridge style drive assembly is designed to be easily maintained or replaced.

Featuring variable vibratory control thru the use of easily accessible, adjustable, eccentric vibratory motor weights. Operators will appreciate the economical operation of the CMI™ HVC-1400/1500-100 Series with the low G-force design, increased life of all components and minimized horsepower requirements.





Ease of maintenance is further enhanced with above floor access for all parts equating to decreased downtime. Screen replacement takes minutes with the assistance of basic hand tools.

Elgin's Horizontal Vibratory Centrifuge is easily installed in nearly every coarse particle circuit.

Elgin Separation Solutions (formerly CMI™) was established in 1938 on the principles of having a great product and even better service. Elgin's Horizontal Vibratory Centrifuges and parts are proudly 100% *Made in America.*





HVC Models:	CMI HVC-1000	CMI HVC-1400-105	CMI HVC-1400-201	CMI HVC-1500-201
Equipment Image:				
Basket RPM:	300 to 1,000 RPM's	300 to 400 RPM's	300 RPM's	270 RPM's
Feed Capacity	80 to 100 stph* (73 to 90 mtph*)	185 to 350 stph* (168 to 317 mtph*)	185 to 350 stph* (168 to 317 mtph*)	200 to 375 stph* (181 to 340 mtph*)
Feed Size:	1 mm to 76 mm (3")	1 mm to 76 mm (3")	1 mm to 76 mm (3")	1 mm to 76 mm (3")
G-Force Range:	50 to 550 G's	70 to 90 G's	50 to 90 G's	50 to 90 G's
Drive Unit:	Belt Driven	Belt Driven	Belt Driven	Belt Driven
Rotation Motor:	20hp (15kW) or 35hp (26kW)	75hp / 55 kW	50hp / 37kW	50hp / 37kW
Vibratory Motor:	(2) 1.5hp / 1.1kW	(2) 3.2hp / 2.4kW	(2) 3.2hp / 2.4kW	(2) 3.2hp / 2.4kW
Lubrication System:	Oil-Bath	Oil-Bath	Oil-Bath	Oil-Bath
Length:	86" (2,184 mm)	116" (2,946 mm)	123" (3,125 mm)	123" (3,125 mm)
Width:	55" (1,397 mm)	109" (2,769 mm)	88" (2,235 mm)	88" (2,235 mm)
Height:	72" (1,828 mm)	79" (2,007 mm)	95" (2,415 mm)	95" (2,415 mm)
Weight:	5,500 lbs (2,495 kgs)	11,500 lbs (5,217 kgs)	15,000 lbs (6,800 kgs)	15,500 lbs (7,030 kgs)

* Actual feed rate dependent on material type, size distribution, and particle density.