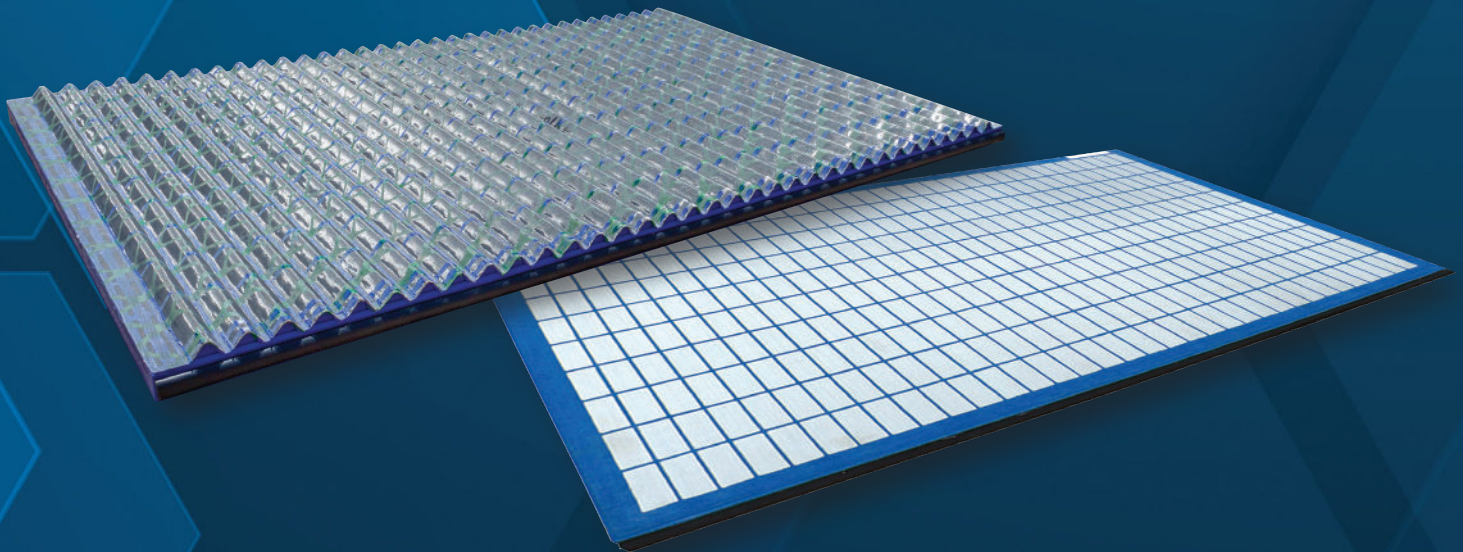




BlueCrest & BlueWave Composite Shaker Screens



Natural Resource Recycling • Product Classification • Dewatering • Fluid Recovery
Waste Management • Material Handling • Liquid/Solid Separation • Crushers • Feeders

TERRASOURCE
GLOBAL
OUR FLAGSHIP BRANDS

GUNDLACH CRUSHERS **JEFFREY RADER** **Pennsylvania** Crusher **ELGIN**

Shale shakers are the backbone for solids control systems. Company's in oil & gas, trenchless, microtunnelling, geothermal, foundation, construction, and water well industries utilize shakers to manage waste solids, to recover drilling fluid or water, increase productivity and reduced disposal costs. In all cases, the quality of the screen dictates the overall performance of the shaker.

Elgin's screens are API compliant and tested by third-party agencies to meet the stringent requirements of API 13C RP.

BlueCrest 28™ & BlueWave 28™ composite screens provide improved quality, performance, storage life, delamination resistance and handling.

API 13C Screen D100 Cut Point Market Comparisons

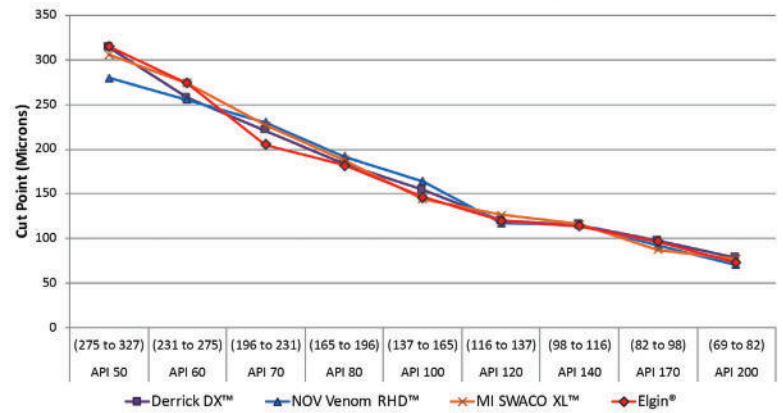
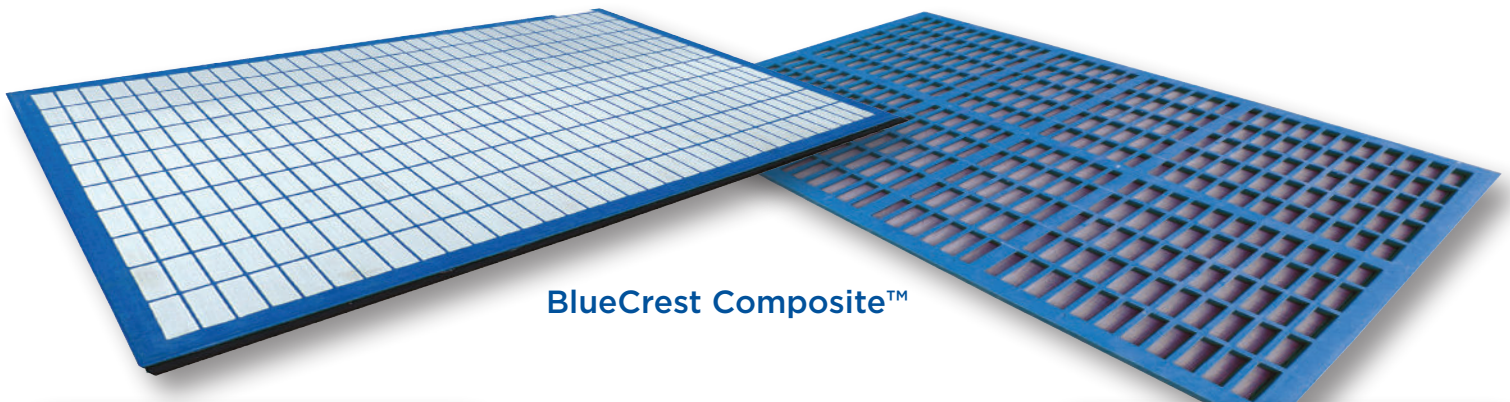
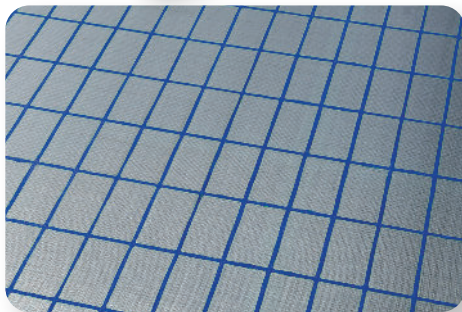


Figure 1: Competitor Cut Point Comparison*



BlueCrest Composite™



Composite screens provide for higher tension of woven wire cloth. As such, they provide for an improved cut point and extended wear life.



Nitrile perimeter gasket provides hydrocarbon resistance and mitigates solids bypass.

Maximum Performance

Elgin's composite screens provide higher surface tension. The heating process causes the wire mesh to contract and provide for a tighter surface tension. The higher the surface tension, the longer lasting the screen. This means that higher flow rates with more viscous drilling fluids can be managed.

Uncompromised Quality

composite screens inherently have a higher quality control. There is no chance for discontinuities and/or variations in the quality. There is no chance for human error in the welding, powder-coating, and/or grinding process. This ensures consistent quality with each screen used.

Resists Premature Delamination

Metal framed screens are made from components that are laminated together by powder-coat paint. This bond is based on the consistency of the powder-coat, how well the metal frame was cleaned, and how well the heat press temperatures were controlled. Composite screens are not laminated. As such, there is no ability for the perforated plate or the wire mesh to prematurely separate from the frame.

NOV®, COBRA®, KING COBRA®, VENOM™, LCM-3D CS™, ALT 1000™, MONGOOSE®, SWACO®, DERRICK® and FLUID SYSTEMS™ are proprietary trademarks of their owners National Oilwell Varco, Inc., M-I LLC (a Schlumberger Company), Derrick Corporation, and Fluid Systems, Inc., respectively. The marks, corresponding products and owners are not affiliated with Elgin Separation Solutions, Elgin Power Solutions or Elgin Power and Separation Solutions. *Competitor data was sourced from marketing data provided by the applicable manufacturers.



API 13C Conductance Market Comparison

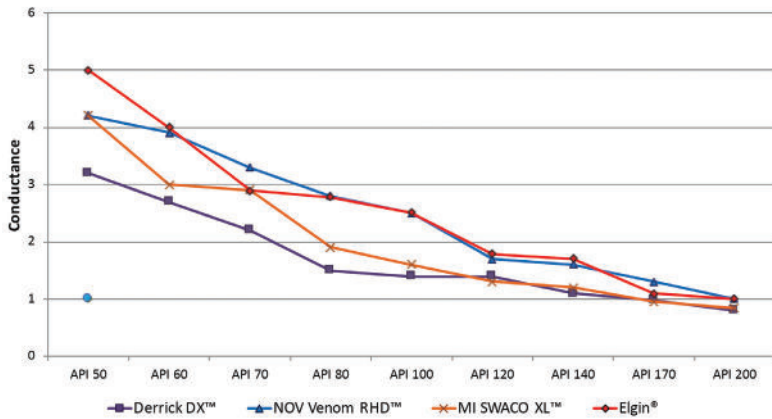
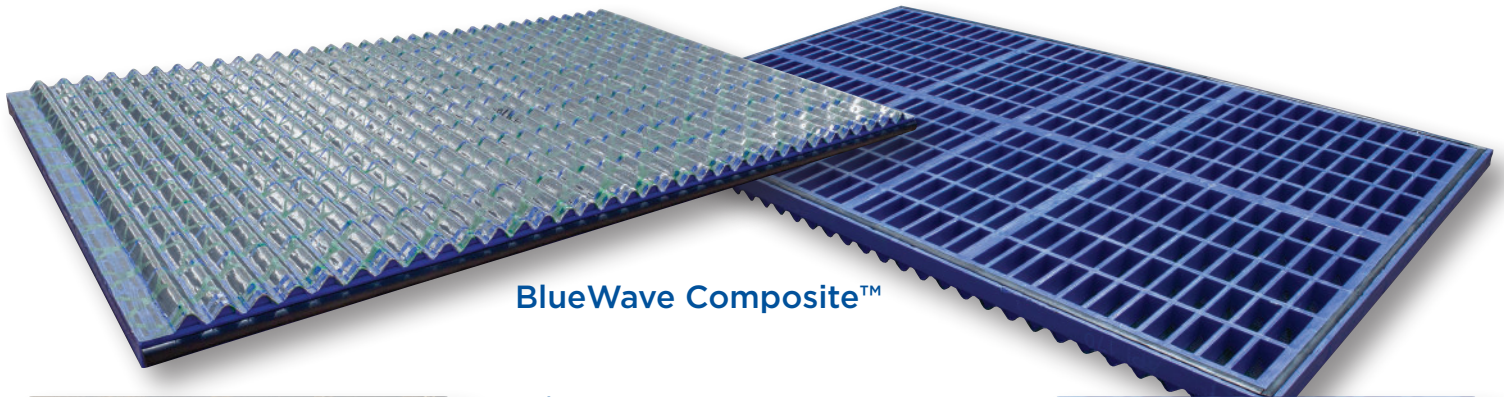


Figure 2: Competitor Conductance Comparison*

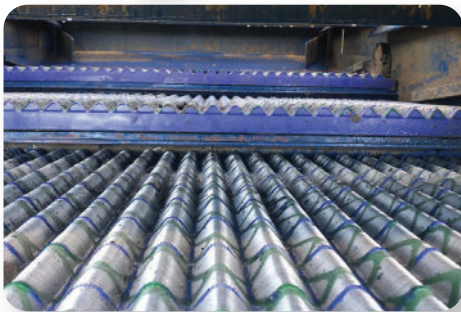
By focusing on each customer’s unique problems, Elgin has become more than an original equipment manufacturer, we have become a trusted solutions provider. With locations and distributors worldwide, we are proud to offer durable value, now. Our pride is truly expressed in our work through our craftsmanship, research, design and the overall practicality of our products.

Let Elgin be your complete turn-key solutions provider for liquid/solid separation, dewatering and waste management operations.

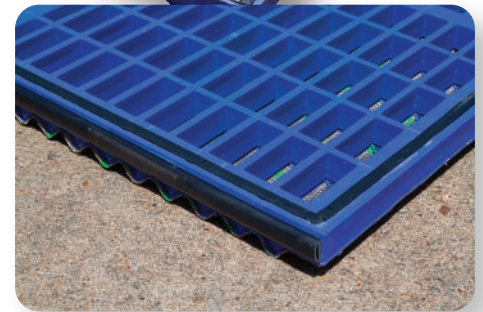
BlueCrest 28™ & BlueWave 28™ composite screens optimize solids control efficiency to reduce costs and waste volumes, regardless of the targeted applications.



BlueWave Composite™



Elgin’s BlueWave composite screen is backwards compatible with all Elgin shakers utilizing KPT-28 screens.



Nitrile perimeter gasket provides hydrocarbon resistance and mitigates solids bypass.

Composite Polyurethane Technology

Traditional screens are constructed using a rigid steel frame and perforated plate; in which layers of woven wire cloth are bonded with powder-coating. New manufacturing technology has advanced shaker screen construction using composite material with steel reinforcement. These changes increase strength, longevity, and performance.

Screen Storage Life

The storage life of a metal framed screen presents a number of complications. Shipping of the screens, or mishandling of them, can cause the screens to warp. The base metal, despite the application of powdercoat, can result in corrosion. This is not the case when managing composite screens. Composite screens frames do not dent or warp from mishandling. They also have no exposed metal, so there is no means for frame corrosion.

Improved Handling

Elgin’s composite screens have less sharp edges that can cut operators when handled. Molded products provide for a cleaner edge and minimize the number of sharp burrs and edges.





Elgin Separation Solutions Replacement Composite Screens

API Rating	API 13C D100 Cut Point (Microns)	API 13C Conductance (kd/mm)	Elgin® Flat Panel (49.25" x 28.25")	Elgin® Wave-Profile (49.25" x 28.25")	NOV™ + Cobra®, King Cobra®, Venom®, LCM-3D CS®, ALT 1000® (49" x 25")	M-I Swaco™ + Mongoose PT®, Mongoose Pro® (46" x 23")	Fluid Systems™ + (42" x 29")
10	1900	40	KPT28-COM-API-10	KPT28-COM-API-10W	N/A	N/A	KTR29-COM-API-10
20	870	17	KPT28-COM-API-20	KPT28-COM-API-20W	KBV-COM-API-20	KMG-COM-API-20	KTR29-COM-API-20
35	491	9.2	KPT28-COM-API-35	KPT28-COM-API-35W	KBV-COM-API-35	KMG-COM-API-35	KTR29-COM-API-35
40	450	6.0	KPT28-COM-API-40	KPT28-COM-API-40W	KBV-COM-API-40	KMG-COM-API-40	KTR29-COM-API-40
50	315	5.0	KPT28-COM-API-50	KPT28-COM-API-50W	KBV-COM-API-50	KMG-COM-API-50	KTR29-COM-API-50
60	275	4.0	KPT28-COM-API-60	KPT28-COM-API-60W	KBV-COM-API-60	KMG-COM-API-60	KTR29-COM-API-60
70	205	2.9	KPT28-COM-API-70	KPT28-COM-API-70W	KBV-COM-API-70	KMG-COM-API-70	KTR29-COM-API-70
80	182	2.8	KPT28-COM-API-80	KPT28-COM-API-80W	KBV-COM-API-80	KMG-COM-API-80	KTR29-COM-API-80
100	146	2.5	KPT28-COM-API-100	KPT28-COM-API-100W	KBV-COM-API-100	KMG-COM-API-100	KTR29-COM-API-100
120	120	1.8	KPT28-COM-API-120	KPT28-COM-API-120W	KBV-COM-API-120	KMG-COM-API-120	KTR29-COM-API-120
140	114	1.7	KPT28-COM-API-140	KPT28-COM-API-140W	KBV-COM-API-140	KMG-COM-API-140	KTR29-COM-API-140
170	97	1.1	KPT28-COM-API-170	KPT28-COM-API-170W	KBV-COM-API-170	KMG-COM-API-170	KTR29-COM-API-170
200	73	1.0	KPT28-COM-API-200	KPT28-COM-API-200W	KBV-COM-API-200	KMG-COM-API-200	KTR29-COM-API-200
230	62	0.7	KPT28-COM-API-230	KPT28-COM-API-230W	KBV-COM-API-230	KMG-COM-API-230	KTR29-COM-API-230
270	56	0.6	KPT28-COM-API-270	KPT28-COM-API-270W	KBV-COM-API-270	KMG-COM-API-270	KTR29-COM-API-270
325	43	0.5	KPT28-COM-API-325	KPT28-COM-API-325W	N/A	KMG-COM-API-325	KTR29-COM-API-325

NOV®, COBRA®, KING COBRA®, VENOM™, LCM-3D CS™, ALT 1000™, MONGOOSE®, SWACO®, DERRICK® and FLUID SYSTEMS™ are proprietary trademarks of their owners National Oilwell Varco, Inc., M-I LLC (a Schlumberger Company), Derrick Corporation, and Fluid Systems, Inc., respectively. The marks, corresponding products and owners are not affiliated with Elgin Separation Solutions, Elgin Power Solutions or Elgin Power and Separation Solutions. *Competitor data was sourced from marketing data provided by the applicable manufacturers.

Natural Resource Recycling • Product Classification • Dewatering • Fluid Recovery
Waste Management • Material Handling • Liquid/Solid Separation • Crushers • Feeders

