



Tabor[™] Grizzly/Pan Vibratory Feeders

**Front-end toughness. Operator-level control.
Technician-friendly uptime.**

When the shift starts, the plant doesn't need "pretty"—it needs steady tonnage. The Tabor[™] Grizzly/Pan Vibratory Feeder is built for the harshest part of the circuit: impact loading, surge material, and the constant fight against premature wear. It combines controlled feeding with early scalping so your primary crusher sees what it should—and skips what it shouldn't.

A loader drops a full bucket into the hopper. Material hits hard. Flow surges. Fines want to pack, stick, and punish everything downstream.

This is where the Tabor[™] feeder earns its keep: it takes the impact, regulates the flow, and starts separating immediately—helping operators keep the crusher fed consistently while reducing the maintenance spiral that comes from sending fines and junk where they don't belong.

**Built for operators: consistent feed =
consistent production**

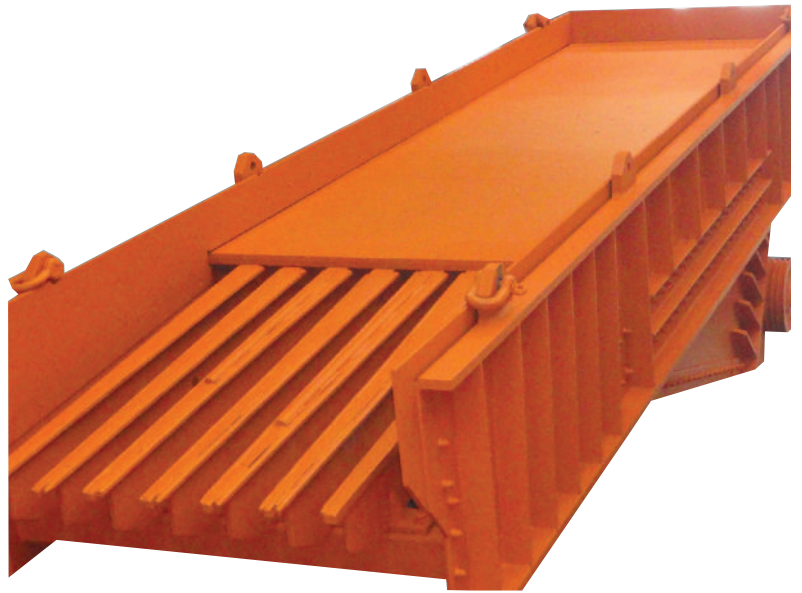
Features you'll feel at the control panel
Smooth, controlled material flow to help stabilize the primary crusher and downstream equipment
Scalping action ahead of the crusher to reduce the amount of unnecessary material going into the chamber.

Multiple sizes and configurations to fit your layout, capacity, and production goals

Benefits you'll see on the production report

- More consistent crusher utilization (less starving/surging)
- Reduced downtime tied to plugging, packing, and wear-driven maintenance
- Cleaner separation path for fines—less work where you don't need it

Start strong at the front end. The Tabor[™] Grizzly/Pan Vibratory Feeder delivers the ruggedness to take the hit, the control to stabilize the flow, and the scalping to protect what's downstream.



Built for technicians: rugged structure + practical wear strategy

Your maintenance team doesn't want "innovative." They want accessible, durable, and predictable. The current brochure's strength is that it clearly calls out the construction and wear strategy—keep that structure, and align it to the Tabor[™] name.

Heavy-duty construction Heavy-duty beam deck construction reinforced in strategic areas

- Robust side plates with horizontal and vertical stiffeners in high-stress areas

Wear protection

- Thick deck plate with replaceable lining
- Replaceable wear liners in high-wear areas, available in multiple abrasion-resistant materials

Grizzly performance you can maintain

- Durable, adjustable fabricated grizzly bars with tapered wear cap